



MARY EHRLICH

January 19, 1922 - December 23, 2016

SERVICES: 11:00 AM MONDAY 12/26/2016 at HEBREW MEMORIAL
CHAPEL

Mary Ehrlich passed away Friday December 23rd at the age of 94.

Beloved wife to the late Harry Ehrlich.

Devoted mother of Michael (Chris) Ehrlich, Linda Bloch, Carol (Jay) Kravetz
and Susan (Richard) Katz.

Loving grandmother of Brian (Hillary) Bloch, Amy (Roger) Young, Cindy
(Jeremy) Durham, Melissa(Richie) Buchan, Max (fiancee, Sujeong Kim)
Ehrlich, Jennifer Kaplan, Ryan (Emily) Kravetz, Rachel (Jerry) Pecka, Nathan
(fiancée Laurens Dubuisson)Katz.

Proud great-grandmother of Dahlia Bloch, Ramona Bloch, Dylan, Evan and
Kelsey Young, Peyton Durham, Brooke Durham, Henry Kravetz, Hannah
Kravetz, Jessica Kaplan, Amanda Kaplan

Cherished sister of the late Aaron (Edith) Maniker, late Irene (late Saul)
Brenner and the late Ethel (David) Silberg.

OFFICIATING:

Rabbi Harold Loss

INTERMENT:

Nusach Hari Cemetery

SHIVA:

The family will observe Shiva through Monday evening
at the residence of Linda Bloch
484 W. Maple
Birmingham, MI 48009
(248) 540-3866

RELIGIOUS SERVICES

7:00 PM Monday evening

CONTRIBUTIONS:

It is suggested that those of you who wish to further honor the memory of
Mary Ehrlich may best do so by means of a contribution to:

Jewish Senior Life

Dorothy and Peter Brown Center

6720 W. Maple Road

West Bloomfield, MI 48322

(248) 592-5032

www.jslmi.org/services/brown-day-care-program/

or

A Charity of Your Choice

Cemetery Details

Nusach Hari

On Woodward Ave north of Machpelah
ferndale, MI

Previous Events

Service

DEC **26**. 11:00 AM (ET)

Hebrew Memorial Chapel
26640 Greenfield Rd
Oak Park, MI 48237
(248) 543-1622
info@hebrewmemorial.org
<https://www.hebrewmemorial.org/>

Shiva

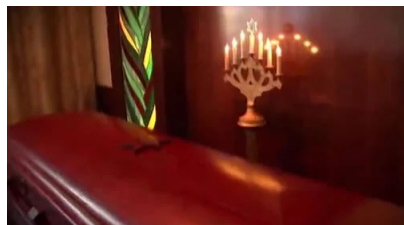
DEC **26** (ET)

Linda Bloch
484 W. Maple
Birmingham, MI 48009

Tribute Wall



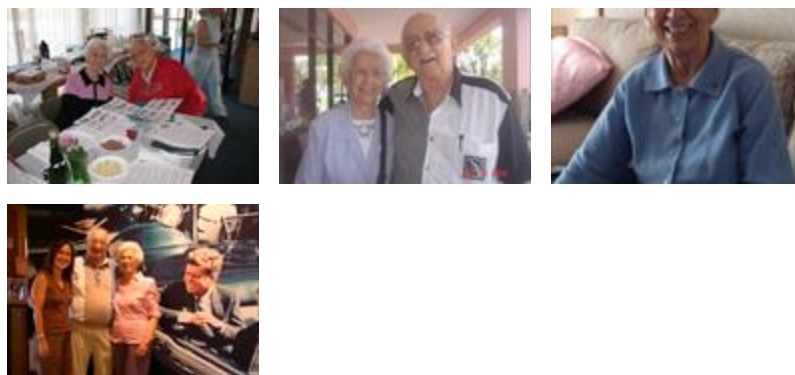
“ *Hebrew Memorial Chapel created a Webcast in memory of MARY EHRlich*



Hebrew Memorial Chapel - December 25, 2016 at 10:28 AM

CI

“ *4 files added to the album New Album Name*



Cindy - December 26, 2016 at 10:00 AM

TE

“ *My deepest condolences to the family, your mom was a beautiful spirit .*

Tisa (Bella's caregiver)

Tisa Early-Goinns - December 25, 2016 at 11:43 AM

RS

“ Hi Carol, Jay and family, sorry to hear about your Mom.

Cynthia & Bob Steinberg

Robert Steinberg - December 24, 2016 at 07:50 AM

AM

“ 2 files added to the album *New Album Name*



Allen Maniker - December 23, 2016 at 02:02 PM

HF

Dear Linda, we were not aware that your Mom passed. Our deepest condolences to you and your family. She was a charming terrific and great person! Love, Harriett and Shel

Harriett Fuller - December 31, 2016 at 03:37 PM