



ELAINE GIRSH

May 31, 1934 - August 1, 2017

SERVICES. 10:00 AM SUNDAY 8/6/2017 at HEBREW MEMORIAL CHAPEL

A LINK WILL BE PROVIDED FOR A WEBCAST OF THE FUNERAL SERVICE.

Long time member of BBAA, Birmingham Bloomfield Art Association.

Beloved wife for 61 years to the late Sheldon Girsh.

Devoted mother of Lorie (Joel Eisenberg) Girsh, Julie (Peter) Borish and Carol (Bill) Pidto.

Loving grandmother of Isabel, Harley and Eliza Borish, Maggie and Sylvie Pidto.

Cherished sister of the late Roslyn (the late Lester) Stein.

Dear sister-in-law of Sylvia (the late Cliff) Ashby and the late Leonard Girsh.

OFFICIATING:

Rabbi Joshua Bennett

INTERMENT:

Machpelah Cemetery

SHIVA:

The family will observe Shiva through Monday evening

at the residence
30172 Kingsway Drive
Farmington Hills, MI 48331
(248) 788-8933

THE FAMILY HAS REQUESTED THAT CONDOLENCE VISITS BE MADE:

SUNDAY IMMEDIATELY FOLLOWING THE INTERMENT AND THROUGH
4:30 PM

AND THEN FROM 6:30 PM TO 8:30 PM

MONDAY: FROM 2:00 PM TO 4:30 PM AND THEN FROM 6:30 PM TO 8:30
PM

RELIGIOUS SERVICES:

7:00 PM Sunday and Monday evenings

CONTRIBUTIONS:

If you would like to further honor the memory of

ELAINE GIRSH

you may do so by making a contribution to:

Fresh Air Society

(Send a Kid to Camp)

6735 Telegraph Rd.

Bloomfield Hills, MI 48301

248-647-1100

Cemetery Details

Machpelah Cemetery

21701 Woodward Avenue
Ferndale, MI 48220

Previous Events

Service

AUG 6. 10:00 AM (ET)

Hebrew Memorial Chapel
26640 Greenfield Rd
Oak Park, MI 48237
(248) 543-1622
info@hebrewmemorial.org
<https://www.hebrewmemorial.org/>

Shiva

AUG 6 to 7 (ET)

Residence
30162 Kingsway Drive
Farmington Hills, MI 48331

Tribute Wall

MB

“ SHARED SO MANY HAPPY MEMORIES AT OUR 65TH REUNION, CENTRAL HIGH, BEVERLY IN OAK PARK & OUR REUNION LUNCHESES: MARLENE JAFFA BORMAN

MARLENE BORMAN - August 07, 2017 at 09:07 AM

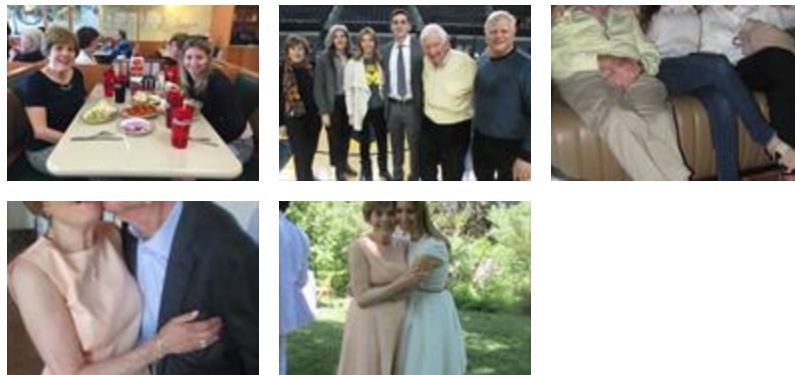
BN

“ Elaine and Sheldon were like an aunt and uncle to all of us Eagles. My thoughts and very deepest sympathy are with you at this time. Barbara (Eagle) Nickel

Barbara Eagle Nickel - August 05, 2017 at 02:01 PM

IS

“ 9 files added to the album New Album Name



Isabel - August 03, 2017 at 06:39 PM



Thank you for doing these, Isabel. Wonderful and beautiful family. Much love, Evo

Evelyn Wolf - August 05, 2017 at 11:27 PM

SA

We watched the service on TV Sunday. Such wonderful words spoken. So articulate. And true. But no words can express the double grief at this time.

Sylvia Ashby - August 09, 2017 at 02:23 PM

SP

“ *The best grandma a 15 year old could ever ask for. I was lucky to have been so close with her. Thank you gram for always putting people before yourself, showing me what love is, and being such an inspiring person. you will be missed by so many. I love you forever. xo Sylvie*

sylvie pidto - August 03, 2017 at 04:46 PM

RR

“ *We were so fortunate to have Elaine in our lives. She was kind, thoughtful, interested in books and people. She cared deeply about those around her. We are deeply saddened at her passing.*

Howard and Rheta Rubenstein

Rheta Rubenstein - August 03, 2017 at 08:37 AM

BS

“ *My heart just hurts for the loss of Elaine. Elaine and I became friends through a working relationship about 20 years ago. Elaine was so sweet and kind and we had such beautiful times together. Elaine was so relatable and easy to speak with. I am SO sad. Condolences to the family. She will be missed by many.*

Beverly Stewart (Marvald)

Beverly Stewart - August 03, 2017 at 08:29 AM